



## Get Involved!

Volunteers and home owners are especially important to slowing the spread of this aggressive invasive plant. Each year, volunteers help remove Mile-a-Minute from select sites in the Hudson Valley. We also depend on your eyes to spot and report new patches of Mile-A-Minute.

**If you think you have Mile-A-Minute on your property or would like to volunteer to help with control projects, please contact the Mile-A-Minute Project Coordinator at [MaMHudsonValley@gmail.com](mailto:MaMHudsonValley@gmail.com).**

He/She will help confirm the plant's identity, provide options for removal, and alert you to volunteer opportunities.

You can also report your sightings online at: <http://www.trailsidezoo.org/mile-a-minute>

The Mile-a-Minute Project of the Hudson Valley has mounted an early detection and rapid response effort to address the invasive mile-a-minute vine. Organizations and government agencies throughout the lower Hudson Valley have collaborated to set up this system in seven target counties: Dutchess, Ulster, Orange, Rockland, Westchester, Sullivan, and Putnam. The ultimate goal of this project is to eradicate mile-a-minute wherever possible and to halt the expansion of the vine in New York State.



For more information about mile-a-minute please visit our website <http://www.trailsidezoo.org/mile-a-minute>

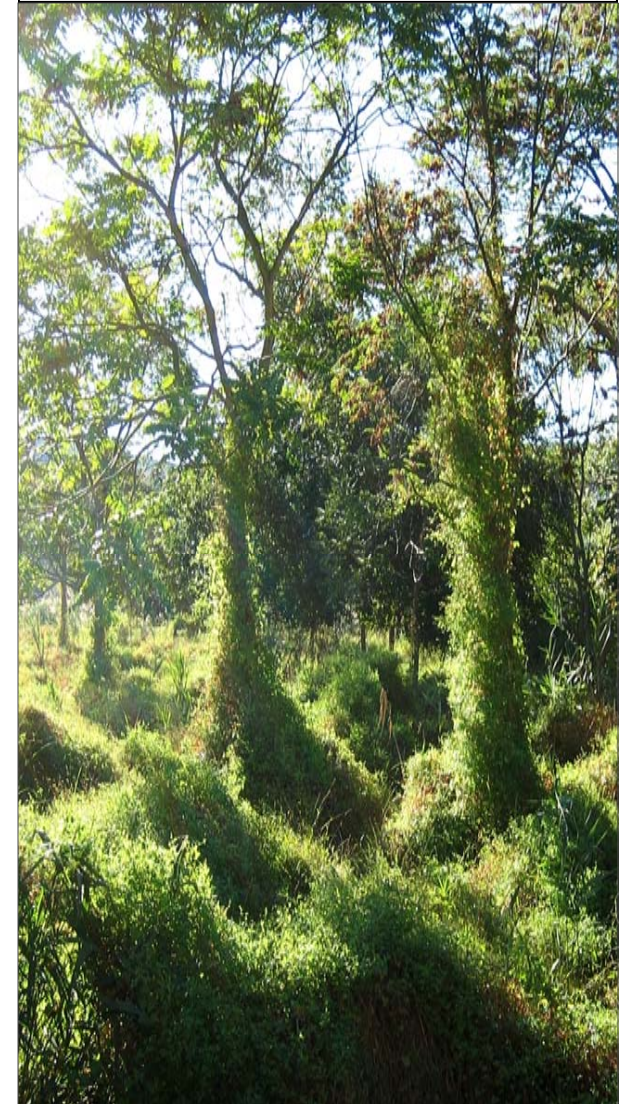
or contact us at:

**Trailside Museums and Zoo  
Bear Mountain State Park  
(845) 786-2701 Ext. 293  
[MaMHudsonValley@gmail.com](mailto:MaMHudsonValley@gmail.com)**



# WANTED

## MILE-A-MINUTE








Help Stop the  
Invasion

## Mile-A-Minute Facts:

- Mile-a-Minute vine (*Persicaria perfoliata*) is a highly aggressive, invasive plant from Asia.
- Mile-a-Minute is an annual vine that grows rapidly – up to 6 inches a day – and can reach over 25 feet long in one year!
- Prickly stems and leaves allow it to climb over surrounding vegetation and form dense, tangled mats that shade out the sun and choke underlying plants.
- The seeds remain viable for up to seven years in the soil.
- It has been found in Westchester, Rockland, Orange, Putnam, Sullivan, and Dutchess Counties.

## Look-alikes

Some invasive plants look very similar to native ones. Mile-a-minute ALWAYS has broad, triangular shaped leaves, prickles, and ocrea. Use the chart and images in this brochure to help you identify it. Not sure? Contact the M-a-M Project Coordinator!

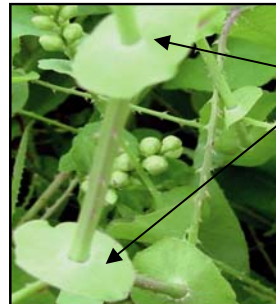
Similar Native Plants	Leaf Shape	Prickles	Ocrea
Arrowleaf tearthumb		<input checked="" type="checkbox"/>	<input type="checkbox"/>
Halberd-leaved tearthumb		<input checked="" type="checkbox"/>	<input type="checkbox"/>
Climbing false buckwheat		<input type="checkbox"/>	<input type="checkbox"/>
Hedge bindweed		<input type="checkbox"/>	<input type="checkbox"/>
Mile-a-minute		<input checked="" type="checkbox"/>	<input checked="" type="checkbox"/>

## How to Identify Mile-a-Minute Vine

**Broad, triangular leaves,**  
1-3 inches wide.



**Curved prickles**  
on stems.



Ocrea

**Flat, round leaves**  
at nodes, called  
ocrea.



Iridescent **berry-like**  
**pale green fruits**  
**that turn blue in**  
**midsummer,**  
0.25" in diameter.

## Habitat

Mile-a-Minute is usually found in open or disturbed areas, including roadsides, wetlands, river banks, fields, forest edges, and construction sites.

## Biocontrol

To help fight the spread of Mile-A-Minute, a biocontrol program was started in 2009. The biocontrol agent is a tiny weevil, *Rhinoncomimus latipes*, that feeds solely on Mile-A-Minute.



Biocontrol weevils are about the size of a pinhead.

You can tell when a weevil has been feeding by the “shotgun hole” pattern on the leaves (see below). Japanese beetles, which also consume the plant, generally leave larger, more irregularly shaped and randomly spaced holes.



The biocontrol program is supported by the USDA and the Philip Alampi Beneficial Insect Laboratory. For more information about the weevils, or about biocontrol, please visit:

<http://www.nj.gov/agriculture/divisions/pi/prog/beneficialinsect.html>